

ELFUERTE

MARBELLA

DISCOVER A
REDESIGNED
ICON

LVXSM

Preferred

HOTELS & RESORTS



INTRO

- 1. BE PART OF OUR HISTORY
- 2. DESIGNED BY JAIME BERIESTAIN

HOTEL EL FUERTE

- 1. THE HOTEL
- 2. FRONT DESK AND LOBBY
- 3. LIBRARY AND CONCIERGE
- 4. POOLS
- 5. ROOMS

SELECTED

- 1. EL FUERTE SELECTED
- 2. LE MARCHÉ SELECTED

GASTRO

- 1. LE MARCHÉ
- 2. SOLEO
- 3. THE EDGE
- 4. LEVANTE
- 5. GRAB 'N GO
- 6. QAHWA

EXPERIENCES

- 1. SPA BY CLARINS
- 2. GYM
- 3. MEETING ROOMS
- 4. SEA SIDE

ELFUERTE

MARBELLA

TIME *to* SHINE

LVXSM



1957—2023

BE PART OF OUR HISTORY

Boasting more than 60 years' experience and history, El Fuerte is one of Marbella's oldest hotels. Our hotel has been given constant refurbishment and maintenance over the years, evolving to become a renowned 5-star hotel. An array of celebrities and renowned figures have stayed with us during the hotel's long history, making it a national and global benchmark of style.

El Fuerte Marbella also features the San Luis Castle inside its grounds, a historic location that has been designated as a Cultural Heritage Site.

DESIGNED BY *Jaime Beriestain*

El Fuerte a historic establishment on the Costa del Sol, now transformed to 5 stars, is the Marbella hotel that best combines casual luxury, an exclusive and welcoming atmosphere and the sheer comfort offered by its location on the city centre's beachfront, which offers stunning sea views right across Marbella's seafront promenade and just a 5-minute walk from the Plaza de los Naranjos, in the Old Town.

The hotel's warm Mediterranean character is reflected in its classic interior design that offers guests timeless quality, designed by prestigious Chilean designer Jaime Beriestain's studio, first-class gastronomy and professional service that puts the finest details first.



ELFUERTE
MARBELLA

LVX™

A CONSOLIDATED DESTINATION

In Marbella nobody is a foreigner. A city where 137 different nationalities coexist, with a very balanced size and population, where more than 30% of the inhabitants are international.

Marbella offers the highest concentration of golf courses in Continental Europe with 15 courses of the highest quality.

Four marinas on 26 km of coastline, together with one of the best regatta courses on the Costa del Sol, make Marbella a benchmark for water sports in Spain.

The active HOTEL EL FUERTE is located in Marbella, a reference town on the Costa del Sol for international tourism, just 60 km from the capital of Malaga.



150Km
of coast side

325
days of sun a year

20°C
average temperature

1.3M
tourist a year

19.8M
airport passengers

ELFUERTE
MARBELLA

LVX™

THE BEST LOCATION OF *Marbella*

Located just 5 minutes from the centre of Marbella's old town and a stone's throw from a wide range of restaurants and shops, El Fuerte Marbella offers guests a highly convenient location where the most important attractions are nearby without giving up the peaceful and calm atmosphere of an urban beach hotel featuring spacious communal areas and the highest quality service dedicated to those guests who seek the ultimate comfortable luxury to look after their health, beauty and wellness.

El Puerto Deportivo, where Marbella's bustling nightlife can be found, is extremely close to our hotel, as is the historic old town which boasts charming lanes filled with shops, the renowned Plaza de los Naranjos square and the Iglesia de la Encarnación church.

**Privileged location
just in the centre of town**



ELFUERTE
MARBELLA

LVX™

HOTEL EL FUERTE, YOUR HOME IN MARBELLA

Contemporary classic interiors



ELFUERTE
MARBELLA

LVXSM

Preferred

HOTELS & RESORTS

HOTEL EL FUERTE, YOUR HOME IN MARBELLA

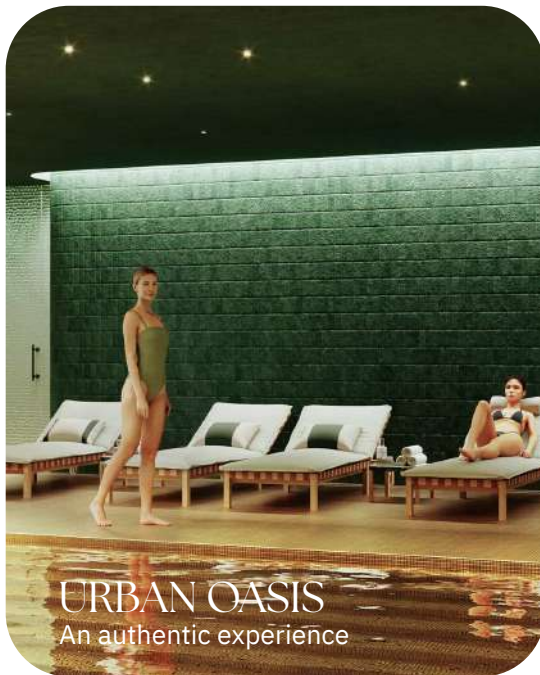
Contemporary classic interiors



COSY AND SOULFUL LUXURY
Hospitality, comfort and tradition



MODERN AND FRESH
A space that will make you shine



URBAN OASIS
An authentic experience



CASUAL LUXURY
A destination in its own right



A UNIQUE SHINE
For original minds that love exploring the details

FRONT DESK AND LOBBY



ELFUERTE
MARBELLA

LVX

FRONT DESK AND LOBBY



ELFUERTE
MARBELLA

LVX

LIBRARY AND CONCIERGE



ELFUERTE
MARBELLA

LVX™

LIBRARY AND CONCIERGE



ELFUERTE
MARBELLA

LVX™

POOLS



ELFUERTE
MARBELLA

LVX

POOLS



ELFUERTE
MARBELLA

LVX

ROOMS

ELFUERTE
MARBELLA

LVX™

ENJOY QUALITY REST IN ROOMS THAT SAY A LOT ABOUT YOUR PERSONALITY

In the rooms of the Hotel El Fuerte Marbella you will feel as comfortable as at home. Chilean interior designer Jaime Beriestain has exquisitely created them with the goal of striking a perfect balance between classic style and a touch of contemporary trends. This design forms the perfect backdrop for an establishment with its own unique character and decades of history. An excellent starting point to enjoy this vibrant destination.

Comfortable and cosy, most of our rooms feature doors that open onto the Mediterranean, taking advantage of the beautiful natural light this part of southern Spain offers us. The rooms are kitted with all the facilities designed for your maximum rest and convenience and are sure to meet all of your needs. For those who desire the most exclusive experiences, our Selected service is an option that will surpass expectations.

The hotel has 266 luxurious rooms. Designed by Jaime Beristain, the 228 double rooms include 46 Selected rooms, 31 junior suites Selected as well as 1 Selected Master Suite are presented in a deliberately light colour scheme with unobtrusive elegance and lightness with incredible sea views.



ELFUERTE
MARBELLA

LVX



Supreme Double Standard
with Terrace
Supreme



Supreme Double Room
with Side Sea View
Supreme



Double room
Front Sea View



Selected Double room
Front Sea View with
Lounge and sofa bed



Selected Junior Suite
Front Sea View



Selected Master
Suite



ELFUERTE
MARBELLA

LVX™

DOUBLE STANDARD WITH TERRACE

Supreme

This double room is set in the perfect location, right in the centre of Marbella and on the beach. Full of sunlight and elegantly decorated, it has everything you will ever need to make your stay truly unforgettable.

- Double bed (200×200 cms) or two single beds (100×200 cms).
- Terrace with views of the street.
- Quilt bedding, Nordic-style duvets and pillow selection are available to choose from.
- Free Wifi.
- Maximum capacity: 2 people.
- Dimensions: 24-26 m²
- Pets are allowed on request
- We have double rooms for single use.



Air
conditioning



Telephone



Minibar



Dryer



High definition
LED TV



Coffee
maker



Iron



Kettle



Safe



Free Hygiene &
cleaning
products

ELFUERTE
MARBELLA

LVX™

DOUBLE ROOM WITH SIDE SEA VIEW

Supreme

Double room with side sea views and designed to impeccable detail to make your stay truly sublime. The terrace offers a privileged view out across the Mediterranean, located only a short distance from the centre of Marbella.

- Double bed (200×200 cms) or two single beds (100×200 cms).
- Terrace with front sea views.
- Quilt bedding, Nordic-style duvets and pillow selection are available to choose from.
- Free internet connection: Wi-Fi.
- Maximum capacity: 2 people.
- Dimensions: 24-30 m2
- Pets are allowed on request



Air
conditioning



Telephone



Minibar



Dryer



High definition
LED TV



Coffee
maker



Iron



Kettle



Safe



Free Hygiene &
cleaning
products

ELFUERTE
MARBELLA

LVX™

DOUBLE ROOM FRONT SEA VIEW

Double room with fantastic frontal sea views and designed to impeccable detail to make your stay truly sublime. From the terrace you'll be able to enjoy the most iconic and breathtaking coastal sites, located only a short distance from the centre of Marbella.

- Double bed (200×200 cms) or two single beds (100×200 cms).
- Terrace with views of the street.
- Quilt bedding, Nordic-style duvets and pillow selection are available to choose from.
- Free Wifi.
- Maximum capacity: 2 people.
- Dimensions: 24-26 m2
- Pets are allowed on request (consult our Pets policy and prices on the FAQ section).
- We have double rooms for single use.



Air
conditioning



Telephone



Minibar



Dryer



High definition
LED TV



Coffee
maker



Iron



Kettle



Safe



Free Hygiene &
cleaning
products

ELFUERTE
MARBELLA

LVX™

DOUBLE ROOM FRONT SEA VIEW WITH LOUNGE AND SOFA BED

Double room with fantastic frontal sea views and designed to impeccable detail to make your stay truly sublime. From the terrace you'll be able to enjoy the most iconic and breathtaking coastal sites, located only a short distance from the centre of Marbella.

- Double bed (200×200 cms) or two single beds (100×200 cms) and sofa bed (90×190 cms).
- Terrace with front sea views.
- Lounge.
- Quilt bedding, Nordic-style duvets and pillow selection
- Free internet connection: Wi-Fi.
- Maximum capacity: 3 people.
- Dimensions: 28-32 m2
- Shower.
- Ceiling fan directly over your bed.
- Pets are allowed on request.



Air
conditioning



Telephone



Minibar



Dryer



High definition
LED TV



Coffee
maker



Iron



Kettle



Safe



Free Hygiene &
cleaning
products

ELFUERTE
MARBELLA

LVX™

JUNIOR SUITE FRONT SEA VIEW

Selected

These suites have outstanding front views over the Mediterranean Sea. Its use of space, light and elegance make these suites a truly magical place to enjoy your holiday in Marbella. Selected rooms.

- Double bed (200×200 cms) or two single beds (100×200 cms each one).
- Terrace with front sea views and sofa.
- Quilt bedding, Nordic-style duvets and pillow selection are available to choose from.
- Free Wifi.
- Maximum capacity: 2 people.
- Dimensions: 37 m2
- Shower.
- Ceiling fan directly over your bed.
- Pets are allowed on request.



Air
conditioning



Telephone



Minibar



Dryer



High definition
LED TV



Coffee
maker



Iron



Kettle



Safe



Free Hygiene &
cleaning
products

ELFUERTE
MARBELLA

LVX™

SELECTED MASTER SUITE

Featuring coveted full-facing Mediterranean sea views, ample space and a range of features that make it the best room in our hotel. Its use of space, light and elegance make these suites a truly magical place to enjoy your holiday in Marbella.

- Double bed (200×200 cms) or two single beds (100×200 cms each one).
- Terrace of 29m2 with front sea views and sofa.
- Quilt bedding, Nordic-style duvets and pillow selection are available to choose from.
- Free Wifi.
- Maximum capacity: 2 people.
- Dimensions: 85 m2
- Shower and bathtub.
- Ceiling fan directly over your bed.
- Pets are allowed on request.



Air
conditioning



Telephone



Minibar



Dryer



High definition
LED TV



Coffee
maker



Iron



Kettle



Safe



Free Hygiene &
cleaning
products

ELFUERTE
MARBELLA

LVX™

selec
Gred

Selected

WHEN EXCLUSIVITY IS ALREADY A STANDARD

A space dedicated to the Selected customer to continue living a gastronomic experience that revolves around food and beverages.

A buffet in constant movement that adapts to the time of day but above all, to the consumption habits and nationality of our customers.

We seek to surprise and pamper them at every moment without leaving the Hotel El Fuerte.



ELFUERTE
MARBELLA
LVX



THE EXCLUSIVITY OF THE SENSES

Exclusivity and customer service will be the two main premises of this space dedicated to entertain the most demanding diner. An area dedicated to the customer currently called exclusive where you can enjoy haute cuisine with exquisite service coupled with an exclusive service. A space that will have an indoor and outdoor area and that moves away from the current concept of breakfast buffet with coffee and juice service at the table. The aim is to offer the client a buffet only during breakfast and, at night, to reinterpret the space with an a la carte gastronomic offer.



GASTRO

ELFUERTE
MARBELLA

LVX™



le MARCHÉ

FINE DINING A LA CARTE

Le Marché

Inspired in an Arab souk, this unique and innovative buffet featuring Mediterranean influences revolves around themed spaces that enhance the full sensory experience.

Offering a personalised service that brings you artisan dishes and recipes homemade 'in situ', as part of our constant search for unique quality through the use of local 0 KM products that are fresh and feature a seal of authenticity and quality.



ELFUERTE
MARBELLA

LXX



SET SAIL ON A CRUISE FILLED WITH MAGIC AND FLAVOUR

Soleo

Mediterranean-inspired cuisine with dashes of fusion. Traditional regional staples such as Spanish rice dishes, fried fish and seafood are combined with a range of more modern and current flavours.

Enjoy stunningly presented dishes and an elegant design, alongside exquisite and professional service. The restaurant's design and decoration transport you to a classically elegant ship where you won't miss out on full sea views.



ELFUERTE
MARBELLA

LVX



THE SKY IS NOT THE LIMIT

The Edge

Edge Skybar is the best spot to take in the gorgeous merging of the sky and the Mediterranean Sea, during daytime at the solarium or at sunset. Enjoy impressive views of the Old Town and Sierra Blanca from the rooftop of the Hotel El Fuerte. The space is home to a unique sky bar that offers cutting-edge mixology authored by Cristian Pineda, founder of the renowned Mixology Art.

An immersive atmosphere to sip a refreshing cocktail in an outstanding environment featuring good music and Marbella at your feet.





AT THE CUTTING EDGE OF TRADITION

Levante

Inspired by the warm breeze felt along the coast of Andalusia as it comes in from the Central Mediterranean, Levante is focused on healthy cuisine which adapts to the products used and the time of day that the dishes are prepared.

The restaurant's trendy dishes, which use seasonal ingredients sourced from the local area, join the range of international dishes already on offer. On top of this, the restaurant's different pop-up spaces offer unique proposals in differing settings, adding value and taking the guest's experience to the next level.



ELFUERTE
MARBELLA

LVX



TERRAZA LOS PINOS:
A SPOT WITH
MARBELLA'S
BEST
TEMPERATURE

Levante

Feel inspired by the fresh breeze of Levante terrace at 'Terraza Los Pinos' and enjoy a wide selection of drinks, food and cocktails in the lounge with the best temperature in Marbella.

An unparalleled location with direct sea views that become your holiday evenings into an undescrivable experience.



ELFUERTE
MARBELLA

LVX™

GRAB
'N GO

TAKE AWAY

WHATEVER
YOU NEED,
WHENEVER
YOU NEED IT

Grab n Go

We want to make things easier for you. Our Grab 'N Go service offers you a selection of food, snacks and drinks ready to enjoy at any time of day or night.

Find everything you could ever wish for without having to worry about times. Because we know how important it is to have a service like this at your fingertips.



ELFUERTE
MARBELLA

LVX™

ENJOY SPECIALTY COFFEE

Qahwa

Sitting down to enjoy a delicious cup of coffee is by no means an ordinary moment. It represents a ritual that provides a moment of peace, calm and reflection. It can also represent sharing ideas, smiles and making plans. That's why enjoying a good cup of coffee shouldn't be treated as an insignificant part of our routines.

Prestigious barista Adrián Fernández created a specialty blend just for El Fuerte Marbella which is drawn from different origins, ensuring that the coffee's aroma, the notes it gives off and the making of the coffee itself become a ritual in their own right, giving us the opportunity to appreciate the intricate culture of this ancestral drink. Welcome to Qahwa, our space dedicated to coffee.



EXPERIENCES

ELFUERTE
MARBELLA

LVX™

SPA

ELFUERTE
MARBELLA

LVX™

SPA EXPERIENCE

By Clarins

You are entering a relaxed atmosphere of mild scents and calming tones with an emphasis on gold. Soft music and careful lighting free your body and clear your mind. A gentle touch of nature rejuvenates, restores and offers a unique experience. Carried away by good vibrations, feeling satisfied about re-discovering your inner balance, you forget everything around you. Allow yourself to experience the brighter side of life!

ELFUERTE
MARBELLA

LVX

MASSAGE
ROOMS

WAITING
ROOM

ELFUERTE
MARBELLA

LVX™



ELFUERTE
MARBELLA

LVX



ELFUERTE
MARBELLA

LVX

GYM

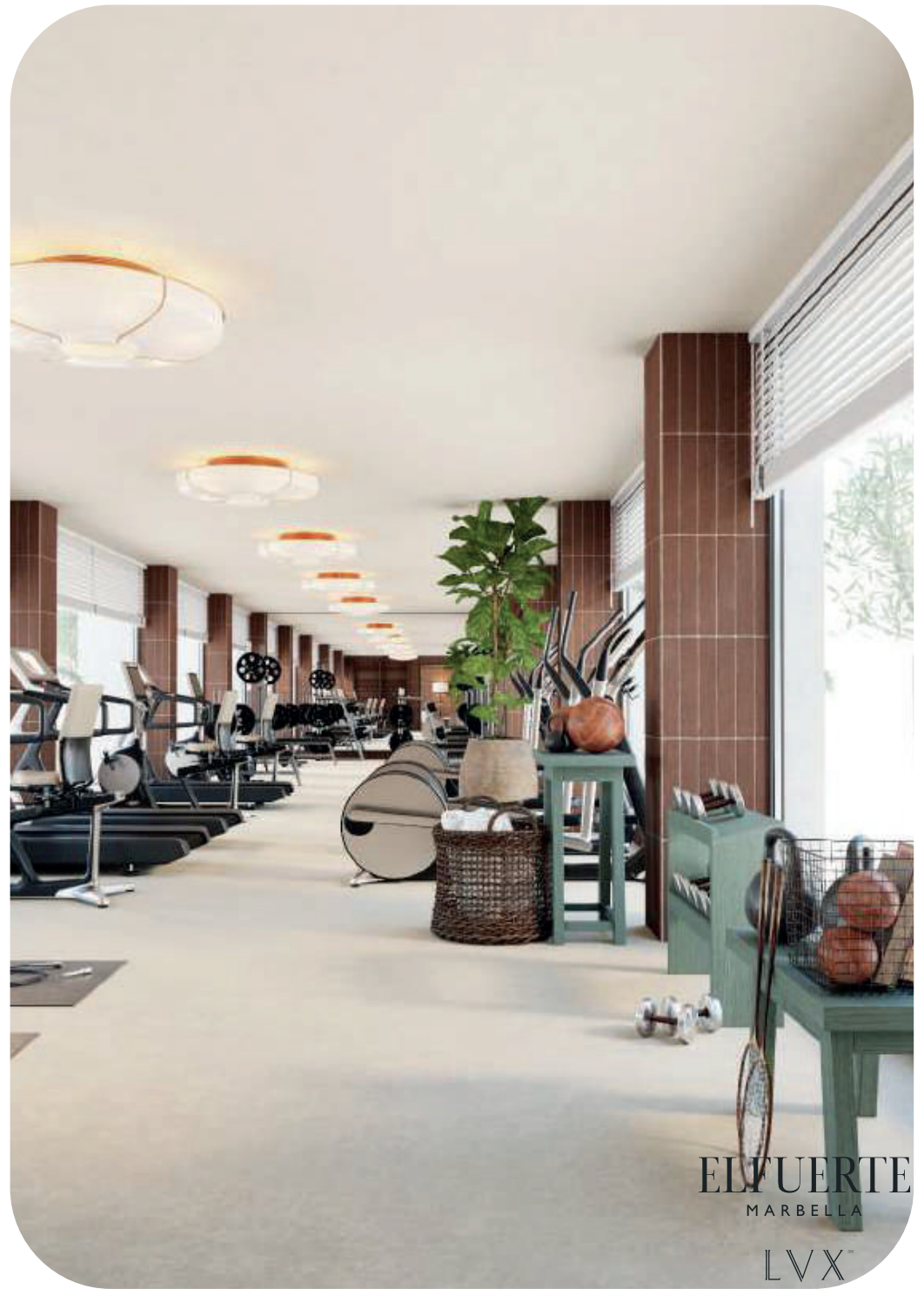
ELFUERTE
MARBELLA

LVX™



EL FUERTE
MARBELLA

LXX



EL FUERTE
MARBELLA
LVX™

MEETING ROOMS

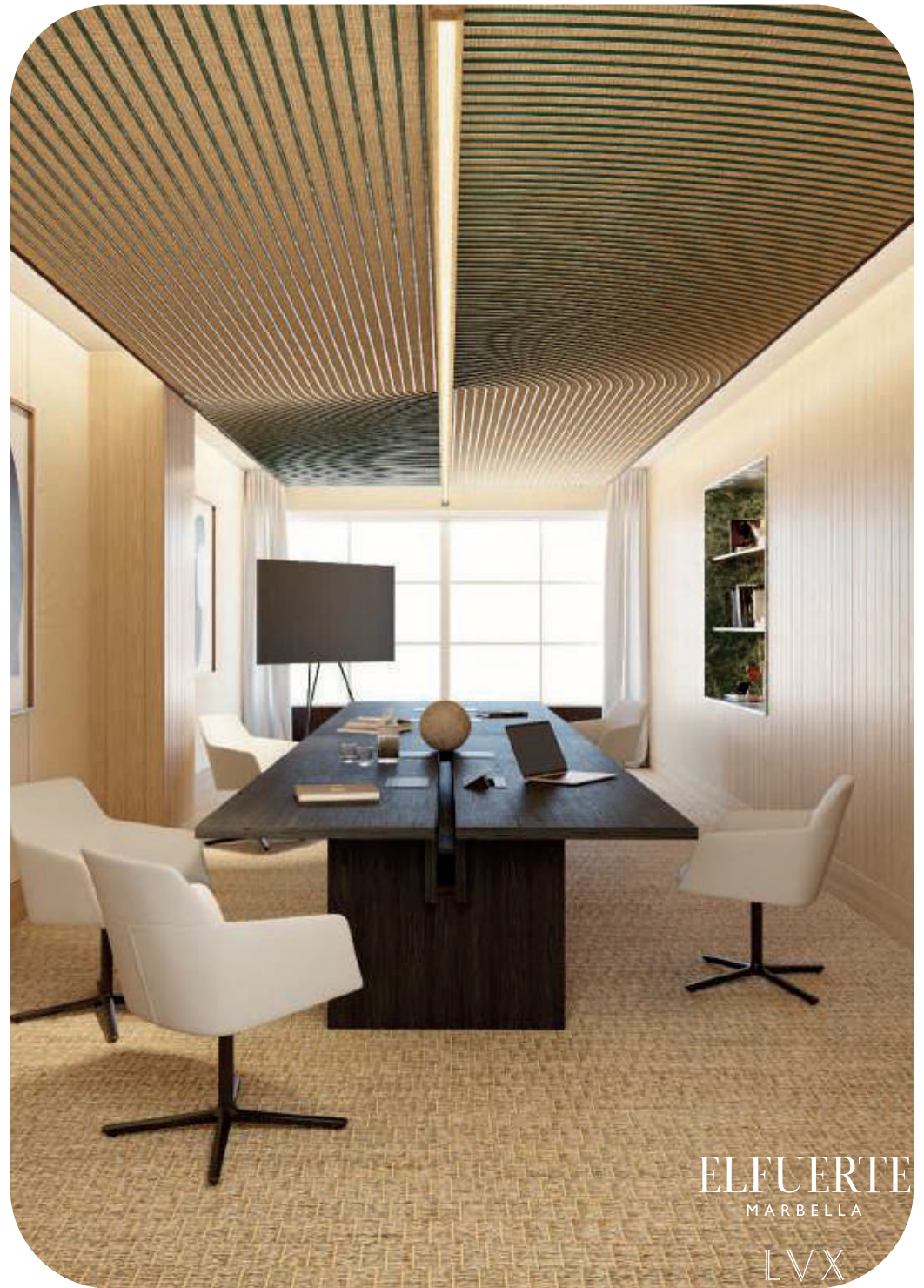
ELFUERTE
MARBELLA

LVX™

MEET WITHOUT *boundaries*



ROOM	SIZE	CEILING	CLASSROOM	THEATER	BANQUET	RECEPTION	CONFERENCE	U SHAPE	H SHAPE
Carmelo	430,6	32	N/A	N/A	N/A	N/A	20	N/A	N/A
Estepa	484,4	32	N/A	N/A	N/A	N/A	15	N/A	N/A
Sevilla	2314,2	32	75	138	96	N/A	N/A	42	N/A



Sea Side

ELFUERTE
MARBELLA

ELFUERTE
MARBELLA

LVX™



SHOPPING EXPERIENCE

Enjoy a shopping experience in exceptional atmospheres with our Sea Side Shopping Area and get lost in excellence retail and experiences corners.

ELFUERTE
MARBELLA

LVX™

Calle El Fuerte, s/n
29602 Marbella, Málaga
fuertehoteles.com
booking@elfuertemarbella.com

H/MA/00069

LVXSM

Preferred
HOTELS & RESORTS

TIME *to* SHINE

ELFUERTE
MARBELLA

